

SUNNY BEAM

Innovative

- > Wireless tabletop device
- > Radio communication with the inverters

Simple

- > Quick installation
- > Power supply via integrated solar cell

User friendly

- > Large, easy-to-read LCD display
- > Display: current power, daily energy, monthly energy
- > USB port for data transfer to PC and battery charge
- > Simple, intuitive interface



SUNNY BEAM

Wireless Plant Monitoring for SMA Inverters

As the owner of a solar system, you have chosen a future-oriented energy source and a long-term source of income. What you need now is the ability to track the performance of your investment: With the easy-to-operate Sunny Beam you can monitor the status and yield of your SMA inverters at any time from a central location. The Sunny Beam is easy to use and displays the inverter data in a clear manner. The wireless device with an attractive yet timeless design allows you to put the Sunny Beam anywhere in your house – allowing you to be constantly informed about the PV-plant performance without having to take a single step – whether it be outside or inside.



SUNNY BEAM

Beautiful System Monitoring

Technology and aesthetics

Easy system monitoring and all the important data at a glance: Sunny Beam combines these functions with an appealing design. It can be used anywhere indoors as a tabletop or wall-mounted unit. Its large dual-mode display shows a daily graph with the developments of the day, the current power, the total energy yield, the current day's energy yield, and a monthly summary in the form of a bar chart.

Additional information – for example, the power from individual inverters, the energy yield in euros, or the CO₂ emission savings – can be quickly viewed at the touch of a button. Sunny Beam features a rotating push-button control for quick and easy menu navigation.



Power supply via solar cell and batteries

USB port for data transfer to the PC and charging of the batteries

Wireless communication with the inverters

Easy to use, intuitive operation with a **single button**

Compact and lightweight
Size: 127 x 75 x 195 mm
Weight: approx. 350 g

Large easy to read **LCD screen**

The Sunny Beam device is a silver, handheld unit with a large LCD screen. The screen displays a power graph at the top, followed by 'P 2.250 kW' and '24053 kWh' and '117823 kWh'. A 'SMA' logo is visible on the top right of the device. A red callout box shows a close-up of the SMA communication port on the back of the device. Another callout shows a close-up of the single button on the side of the device. A third callout shows a close-up of the USB port on the side. A fourth callout shows a close-up of the solar cell and battery area on the top. A fifth callout shows a close-up of the LCD screen displaying a bar chart.

Wireless

The Sunny Beam communicates with the SMA inverters in your system effortlessly through a wireless link. Each Sunny Beam can communicate with up to four SMA inverters. Sunny Beam is powered by an integrated solar cell. A battery guarantees that the system data will be displayed without fail – even on days with little sunshine. This means you can position the Sunny Beam anywhere in your house and have it close by at all time to keep your-

self informed about the system performance. No power cable, no connection cables. Sunny Beam is a convenient independent unit that completely eliminates unsightly wiring from your home. As well as its real-time display, Sunny Beam can also store yield data from the last 30 days. The integrated USB interface is used to read the saved data of the entire system and to archive it on the PC by using the Sunny Data Control software included in the delivery.

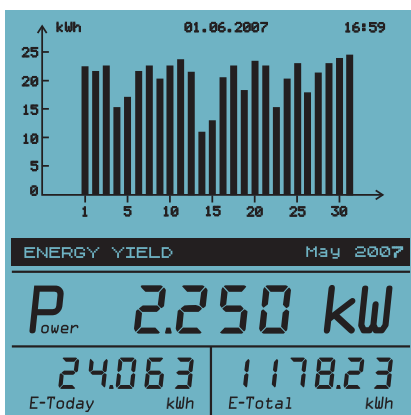
Summary

Sunny Beam performs complete system monitoring and shows you how your solar system is performing – any time and anywhere you want.

Technical Data SUNNY BEAM

SUNNY BEAM		
Communication		
Frequency band	868 MHz	
Range in open air	up to 100 m	
Range inside buildings	up to 30 m	
Interface	USB 1.1	
Display		
LCD	graphic capability (160 x 100 pixels), 1 x 5-digit 7-segment, 2 x 6-digit 7-segment	
Operation	rotating push button	
Language	Ger. / Engl. / Span. / Fren. / Ital.	
Mechanical data		
Dimensions in mm	127 x 75 x 195	
Weight	approx. 350 g	
User-defined status bar		
The following information can be displayed	<ul style="list-style-type: none"> • Power of individual inverters, • Percentage output of your inverters • Inverter device types • Inverter serial numbers, • Yields in a specified currency • CO₂ savings 	

Monthly overview



Daily progress

